

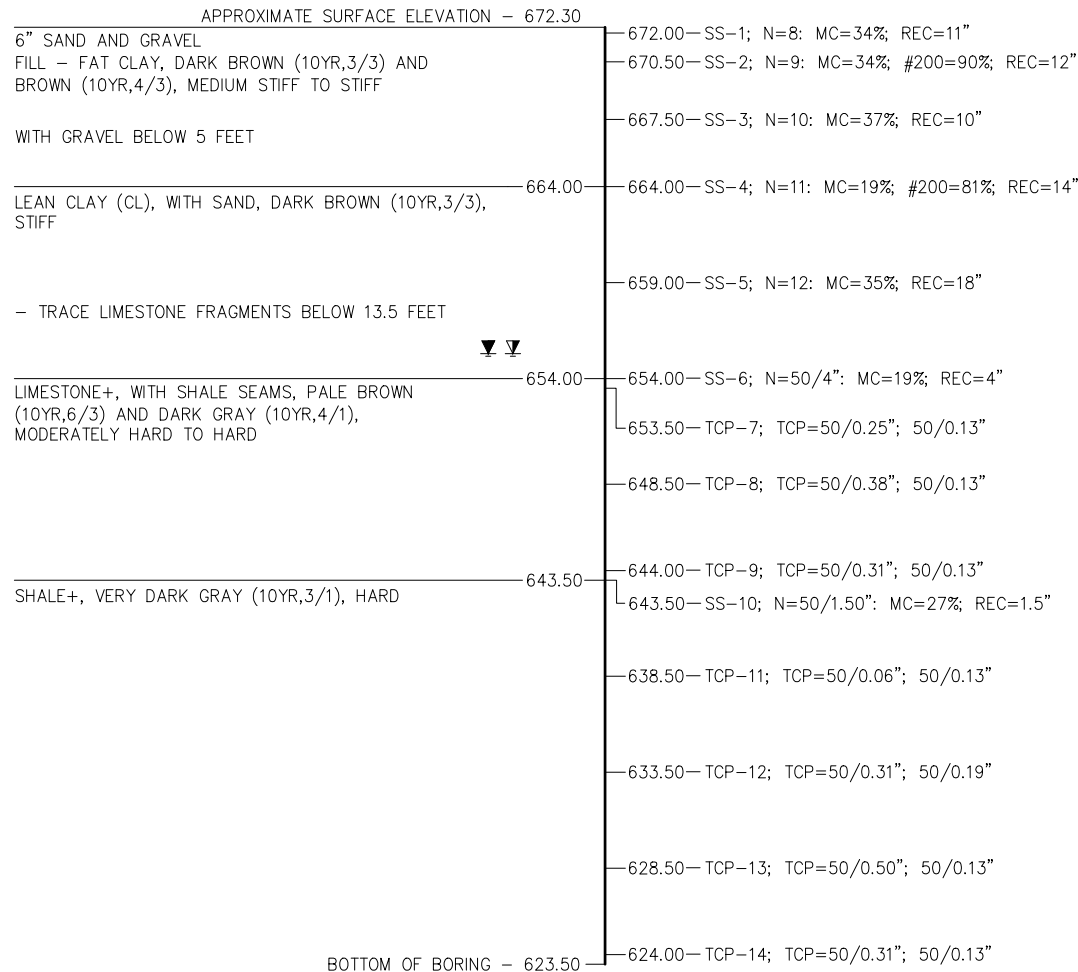
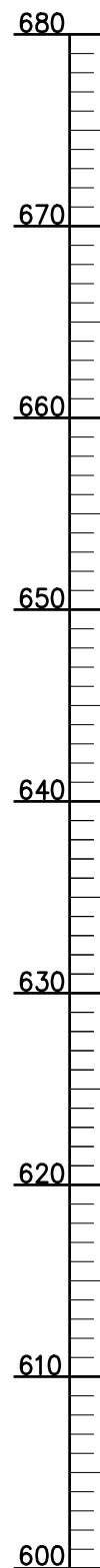
REVISIONS		
REV. NO.	DESCRIPTION	DATE

**BORING NO. B-1**

STA. 302+18, 29' LT. OF CRL SH-28  
(JANUARY 29, 2015)

**BORING NO. B-2**

STA. 303+43, 8' RT. OF CRL SH-28  
(JANUARY 30, 2015)



6" SAND AND GRAVEL  
FILL - FAT CLAY, DARK BROWN (10YR,3/3) AND  
BROWN (10YR,4/3), MEDIUM STIFF TO STIFF

WITH GRAVEL BELOW 5 FEET

LEAN CLAY (CL), WITH SAND, DARK BROWN (10YR,3/3),  
STIFF

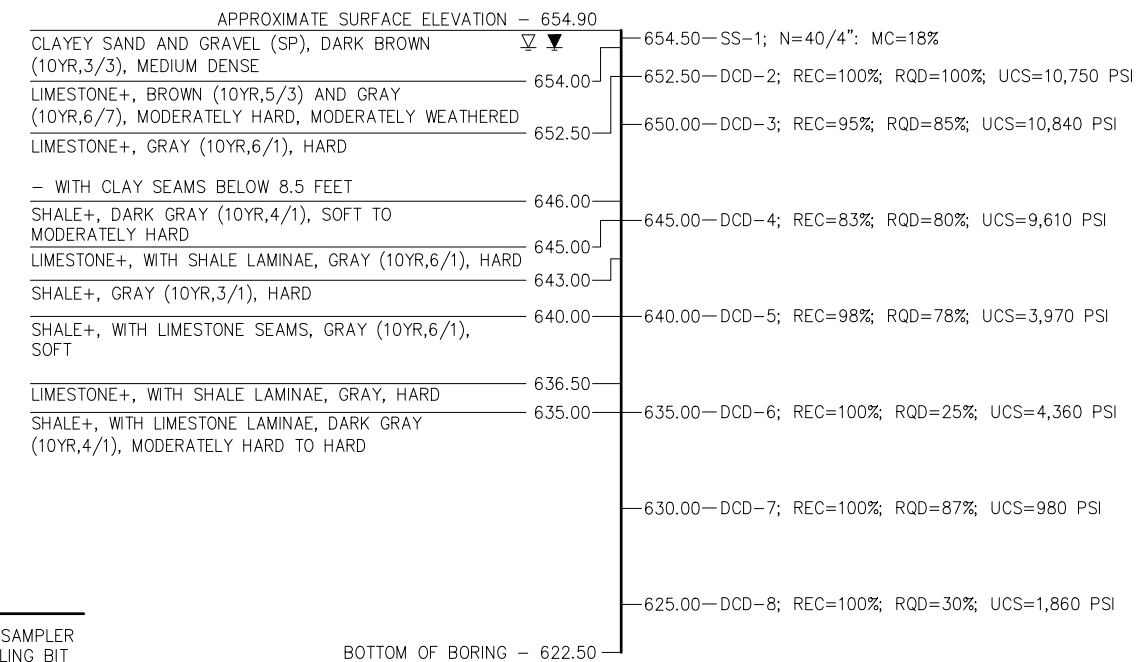
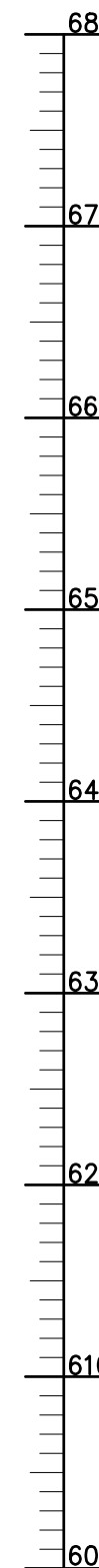
- TRACE LIMESTONE FRAGMENTS BELOW 13.5 FEET

LIMESTONE+, WITH SHALE SEAMS, PALE BROWN  
(10YR,6/3) AND DARK GRAY (10YR,4/1),  
MODERATELY HARD TO HARD

SHALE+, VERY DARK GRAY (10YR,3/1), HARD

+ROCK CLASSIFICATION IS  
ESTIMATED FROM DISTURBED  
SAMPLES. CORE SAMPLES AND  
PETROGRAPHIC ANALYSIS MAY  
REVEAL OTHER ROCK TYPES.

**SITE GEOLOGY:**  
BASED ON THE RESULTS OF THE BORINGS AND INFORMATION  
PUBLISHED IN THE OKLAHOMA DEPARTMENT OF TRANSPORTATION  
MANUAL, "ENGINEERING CLASSIFICATION OF GEOLOGIC MATERIALS:  
DIVISION 8", THE PROJECT IS LOCATED WITHIN THE FORT SCOTT  
UNIT. THIS UNIT CONSISTS OF LIMESTONE AND SHALE.



CLAYEY SAND AND GRAVEL (SP), DARK BROWN  
(10YR,3/3), MEDIUM DENSE

LIMESTONE+, BROWN (10YR,5/3) AND GRAY  
(10YR,6/7), MODERATELY HARD, MODERATELY WEATHERED

LIMESTONE+, GRAY (10YR,6/1), HARD

- WITH CLAY SEAMS BELOW 8.5 FEET

SHALE+, DARK GRAY (10YR,4/1), SOFT TO  
MODERATELY HARD

LIMESTONE+, WITH SHALE LAMINAE, GRAY (10YR,6/1), HARD

SHALE+, GRAY (10YR,3/1), HARD

SHALE+, WITH LIMESTONE SEAMS, GRAY (10YR,6/1),  
SOFT

LIMESTONE+, WITH SHALE LAMINAE, GRAY, HARD

SHALE+, WITH LIMESTONE LAMINAE, DARK GRAY  
(10YR,4/1), MODERATELY HARD TO HARD

**LEGEND**

- SS = SPLIT SPOON SAMPLER
- DB = DIAMOND DRILLING BIT
- N = NUMBER OF BLOWS PER 12 INCHES
- MC = MOISTURE CONTENT
- LL = LIQUID LIMIT
- PL = PLASTIC LIMIT
- PI = PLASTICITY INDEX
- NP = NON-PLASTIC
- #200 = PERCENT PASSING #200 SIEVE
- TCP = TEXAS CONE PENETROMETER
- DCD = DIAMOND CORE BARREL DRILLING
- UCS = UNCONFINED COMPRESSIVE STRENGTH
- RQD = ROCK QUALITY DESIGNATION
- REC = RECOVERY
- ▽ = WATER LEVEL WHILE DRILLING OR SAMPLING
- ▽ = WATER LEVEL AFTER DRILLING
- ▽ = WATER LEVEL 24 HOURS AFTER DRILLING

Monday, July 31, 2017 4:11:52 PM V:\12-716E SH-28 Salt Creek JP.28857\STRUCTURAL\DWG\Salt Creek - FOUNDATION REPORT.dwg

TO OBTAIN THE COMPLETE GEOTECHNICAL REPORT CONTACT THE OFFICE ENGINEER  
DIVISION OF THE OKLAHOMA DEPARTMENT OF TRANSPORTATION AT (405) 521-2625.

DESIGN		SH-28 OVER SALT CREEK	NOWATA COUNTY
DETAIL		BRIDGE "A"	
CHECK			
GUY ENGINEERING SERVICES, INC.		<b>FOUNDATION REPORT (SHEET NO. 1 OF 3)</b>	
		STATE JOB PIECE NO. 28857(04)	SHEET NO. B003